

MAP PF-1 Location and Setting

- Vallejo City Limit
- Regional Open Space (Outside Vallejo)
- Sphere of Influence (SOI)
- Railroad



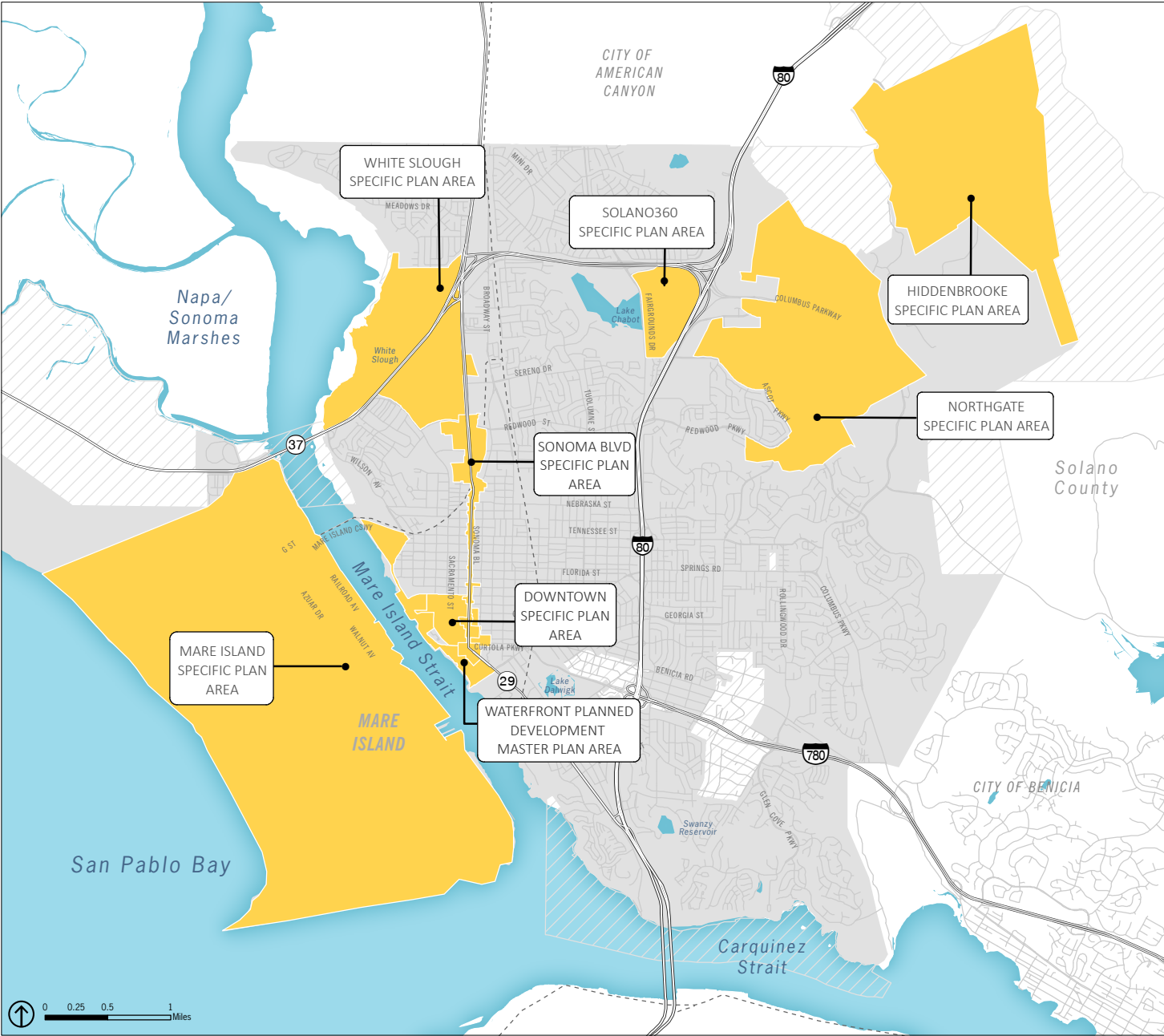
Regional Location



Source: City of Vallejo, 2014; Solano County, 2014; USGS, 2014; Bay Area Open Space Council, 2014; PlaceWorks, 2016.

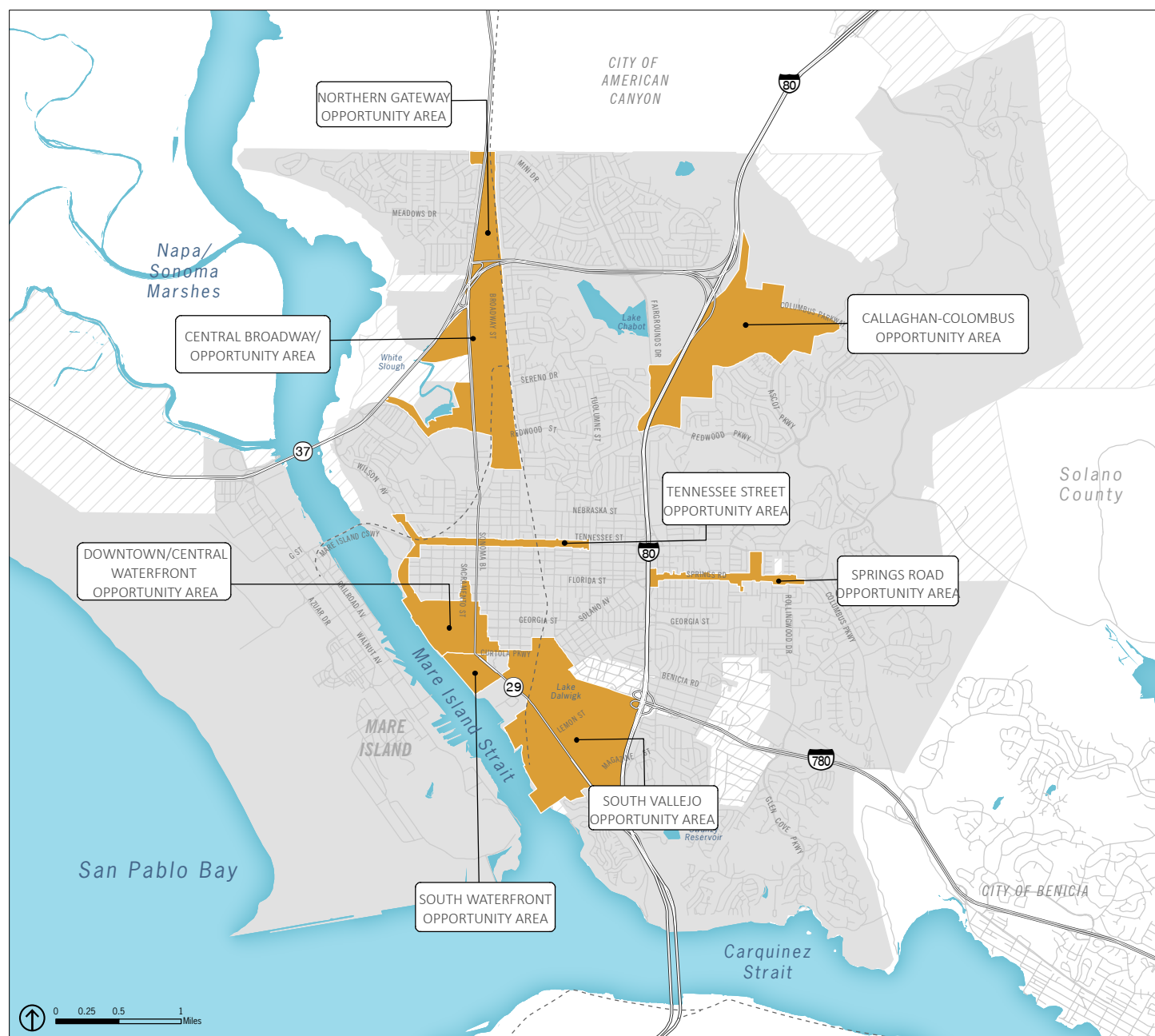
MAP PF-3 Specific Plan and Master Plan Areas

- Specific Plan and Master Plan Area
- Railroad
- Sphere of Influence (SOI)
- Vallejo City Limit



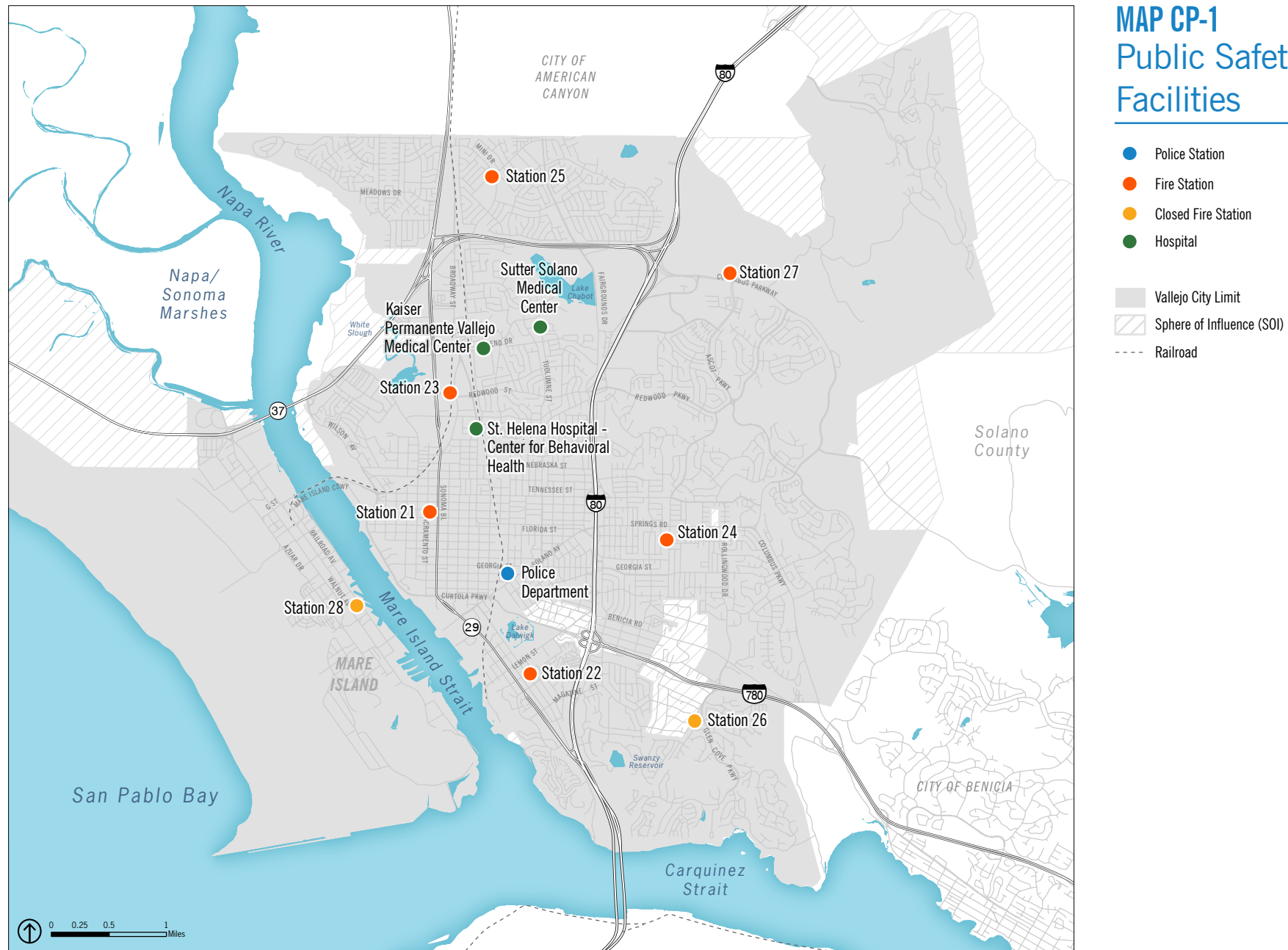
MAP PF-4 Opportunity Areas

- Opportunity Area
- Vallejo City Limit
- Sphere of Influence (SOI)
- Railroad



Source: City of Vallejo, 2016; ABAG, 2016; PlaceWorks, 2016.

MAP CP-1 Public Safety Facilities



Source: City of Vallejo, 2014; Solano County, 2014; ESRI 2010; PlaceWorks, 2016.

MAP CP-2 Parks and Schools



Mini Parks (<1 Acre)

1. Coventry Way
2. Crescent Park
3. Garthe Estates
4. Glen Cove Marina
5. Knights Circle
6. Martin Luther King Jr. Unity Plaza
7. Reflections Park

Neighborhood Parks (approx. 4-10 Acres)

8. Alden Park
9. Bennington Park
10. Beverly Hills Park
11. Borges Ranch Park
12. Carquinez Park
13. Castlewood Park
14. Chapel Park
15. City Park
16. Crest Ranch
17. Delta Meadows Park
18. Fairmont Park
19. Glen Cove Park
20. Grant Mahoney Park
21. Henry Ranch Park
22. Hiddenbrooke Park
23. Highlands Park
24. North Vallejo Park
25. Northgate Neighborhood Park
26. Richardson Park
27. Service Club Park
28. Setterquist Park
29. Sheveland Park
30. Terrace Park
31. Washington Park
32. Wilson Park

Community Parks (approx. 10-70 Acres)

33. Blue Rock Springs Park
34. Dan Foley Park
35. Glen Cove Nature Area
36. Hanns Memorial Park
37. Independence Park
38. Lake Dalwigk Park
39. Wardlaw Park

Special Use Parks

40. Amador Tennis Park
41. Children's Wonderland
42. McIntyre Ranch
43. Wardlaw Skate/BMX Park

Linear Parks

44. Blue Rock Springs Trail

Natural Open Space

45. Hiddenbrooke Open Space
46. River Park

Planned Parks

47. City Park - Mare Island
48. Club Drive Park
49. Creek Park
50. Festival Green

Schools

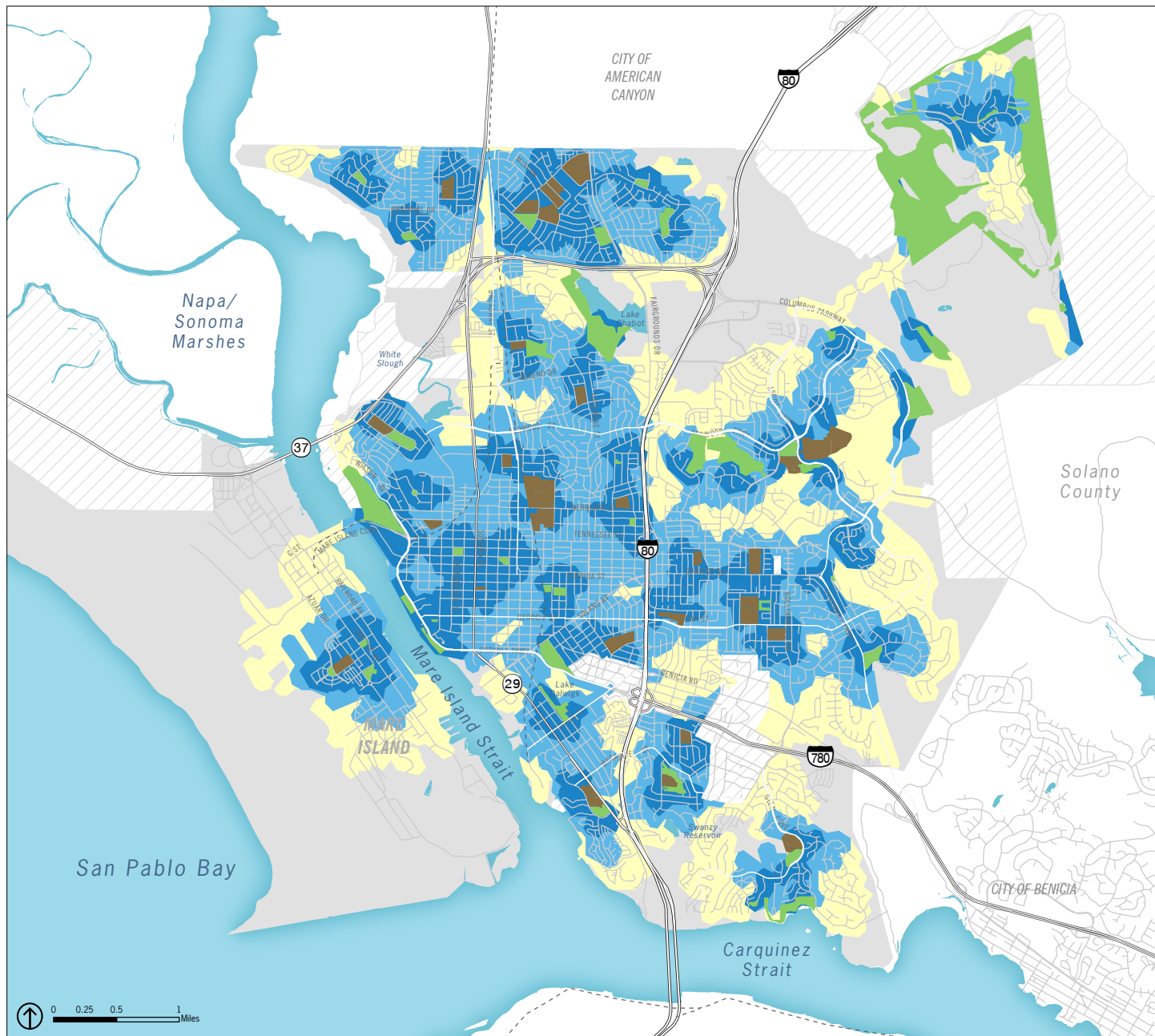
1. Annie Pennycook Elementary
2. Beverly Hills Elementary
3. Cave Language Academy
4. Caliber Charter School (Planned)
5. Cooper Elementary
6. Dan Mini Elementary
7. Elsa Widenmann Elementary
8. Federal Terrace Elementary
9. Franklin Middle School
10. Glen Cove Elementary
11. Grace Patterson Elementary
12. Highland Elementary
13. Hogan Middle School
14. Jesse M. Bethel High School
15. John Finney High School/Peoples (Continuation School)
16. Joseph H. Wardlaw Elementary
17. Lincoln Elementary School
18. Loma Vista Environmental Science Academy
19. Mare Island Health & Fitness Academy
20. Mare Island Technological Academy
21. Solano Middle School
22. Steffan Manor Elementary
23. Vallejo Adult Transition/Everest
24. Vallejo Charter School
25. Vallejo Education Academy
26. Vallejo High School
27. Vallejo High School/ Independent Study Academy
28. Vallejo Regional Education Center



MAP CP-3 Parkland Access

- Parks
- Schools
- Within 0.25 Mile of Park/School
- Within 0.5 Mile of Park/School
- Within 1 Mile of Park/School
- Railroad
- Vallejo City Limit
- Sphere of Influence (SOI)

Park access is generated using a walkable street and sidewalk network.



MAP CP-4 Cultural and Recreational Facilities

● Museums and Art Facilities

1. Artisen Cultural Art Center
2. Coal Shed Studios Building
3. Empress Theatre
4. Fetterly Playhouse
5. Mare Island Museum
6. Mira Community Cultural Center
7. The Hub
8. Vallejo Architecture Heritage Foundation
9. Vallejo Naval & Historical Museum
10. Vallejo Symphony

● Library

11. John F. Kennedy Library
12. Springtowne Library

● Cultural & Community Centers

13. Dan Foley Cultural Center
14. Florence Douglas Senior Center
15. Norman C. King Community Center
16. North Vallejo Community Center
17. Omega Boys and Girls Club
18. Vallejo Community Center
19. Vallejo Veterans Memorial Building

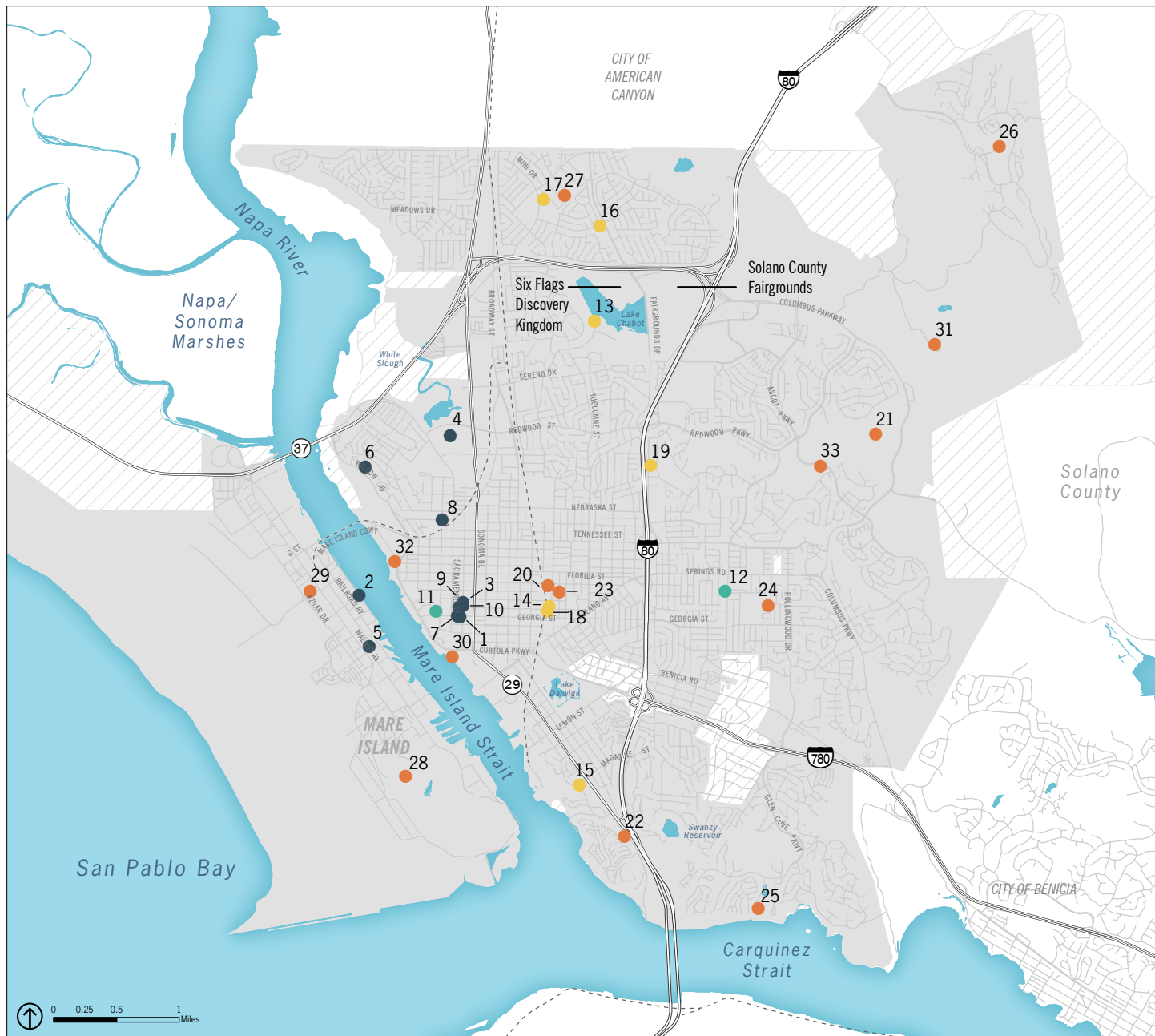
● Sports & Recreation Facilities

20. Amador Tennis Courts/Recreation Center
21. Blue Rock Springs Golf Course
22. CSU Phys Ed and Aquatics Center
23. Children's Wonderland
24. Cunningham Aquatic Center
25. Glen Cove Marina
26. Hiddenbrooke Golf Club
27. Loma Vista Farm
28. Mare Island Golf Club
29. Mare Island Sports Complex
30. Vallejo Boat Launching Facility
31. McIntyre Ranch
32. Vallejo Municipal Marina
33. Wardlaw Skate/BMX Park and Dog Park

Vallejo City Limit

Sphere of Influence (SOI)

Railroad



Source: City of Vallejo, 2014; Solano County, 2014; ESRI, 2010; PlaceWorks, 2016.

MAP NBE-1 Regional Open Space and Waterways

California Department of Fish and Wildlife

1. Napa-Sonoma Marshes Wildlife Area

California Department of Parks and Recreation

2. Benicia State Recreational Area

City of American Canyon

3. Newell Open Space Preserve

City of Benicia

4. Bratto Open Space
5. Lake Herman Open Space Area
6. Tourtelot Open Space

City of Vallejo

7. Mare Island Open Space/Wetlands Area
8. White Slough Specific Plan Wetlands Area

East Bay Regional Park District

9. Carquinez Strait Regional Shoreline
10. Crockett Hills Regional Park

Solano Land Trust

11. Eastern Swett Ranch
12. King Ranch
13. Lynch Canyon Open Space
14. Vallejo Swett Ranch

United States Fish and Wildlife Service

15. San Pablo Bay National Wildlife Refuge

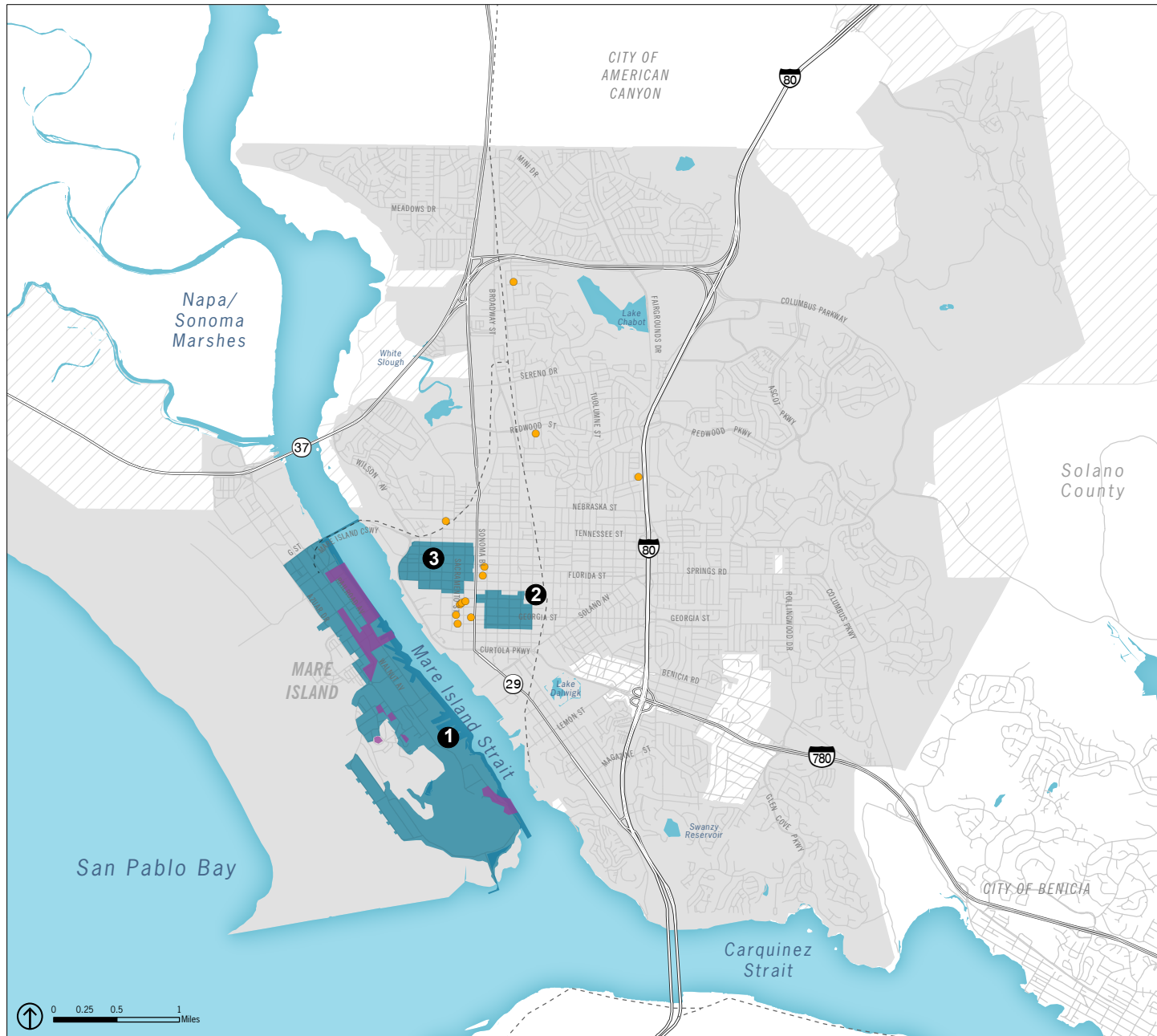
- Streams
- Regional Open Space
- Urban Parks/Other Open Space Lands
- Vallejo City Limit
- Sphere of Influence (SOI)
- Railroad



Source: City of Vallejo, 2014; Solano County, 2014; California Protected Areas Database, 2015; USGS, 2014; ESRI 2010; PlaceWorks, 2016.

MAP NBE-2 Historic Resources

- National Register Historic Districts
 1. Mare Island
 2. Architectural Heritage District
 3. Saint Vincent's Hill
- Mare Island National Historic Landmark District
- Historic Resources Outside of Districts
- Railroad
- Sphere of Influence (SOI)
- Vallejo City Limit



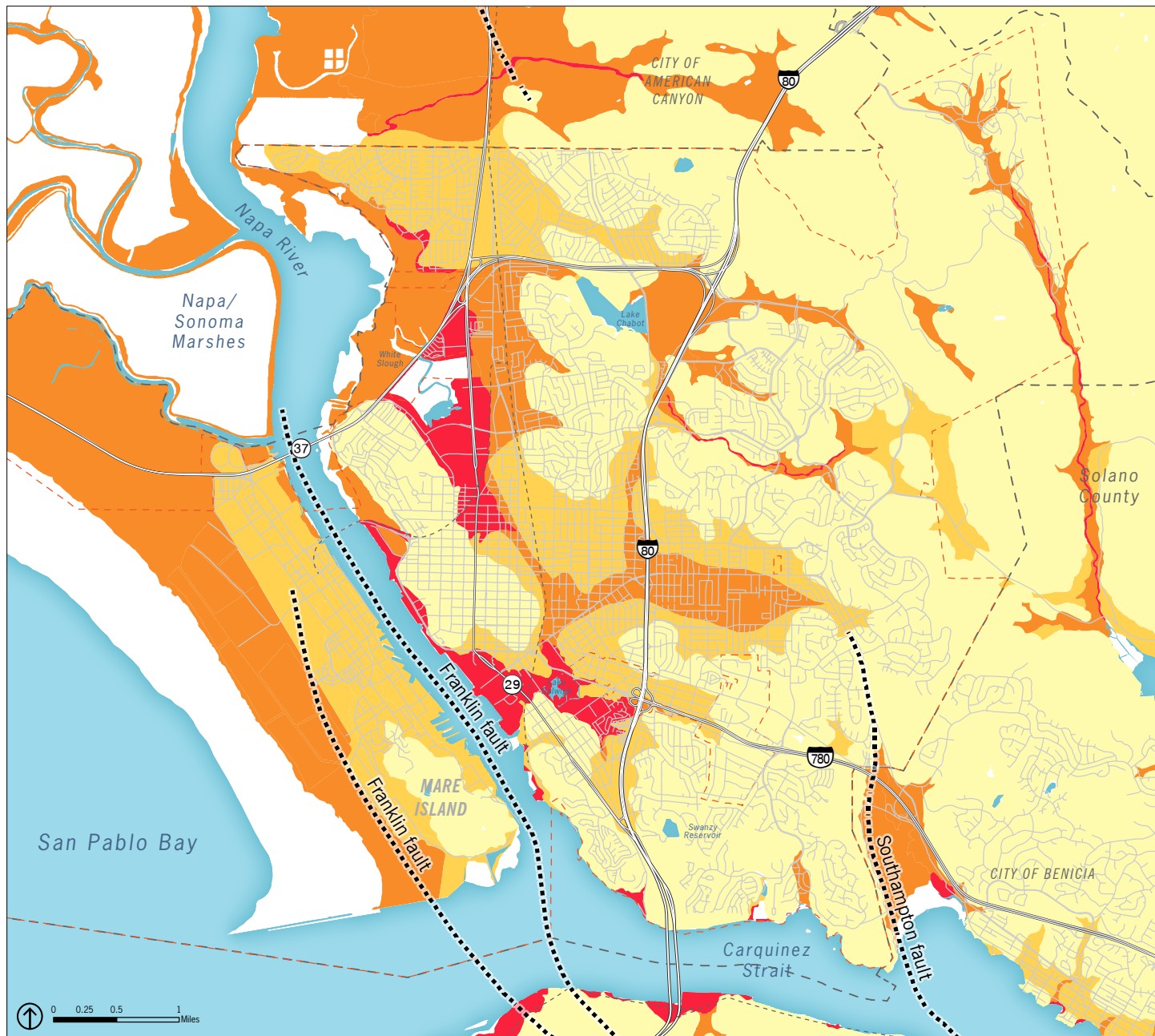
Source: City of Vallejo, 2014; ESRI 2010; PlaceWorks, 2016.



MAP NBE-3

Earthquake and Liquefaction Hazard Zones

- Faults
- Liquefaction Susceptibility**
 - Very High
 - High (not visible in map extent)
 - Medium
 - Low
 - Very Low
- - - - - Vallejo City Limit
- - - - - Sphere of Influence (SOI)
- - - - - Railroad



Disclaimer: Maps depict the regional distribution of Quaternary surficial deposits and relative liquefaction susceptibility zones in the central San Francisco Bay area and are appropriate for planning purposes. The maps lack the necessary resolution, however, for site-specific conclusions or design.

Source: City of Vallejo, 2014; Solano County, 2014; USGS, 2006/2010; EnGeo Memo, 1/11/2016; ESRI 2010; PlaceWorks, 2016.

MAP NBE-4 Wildfire Risk Areas

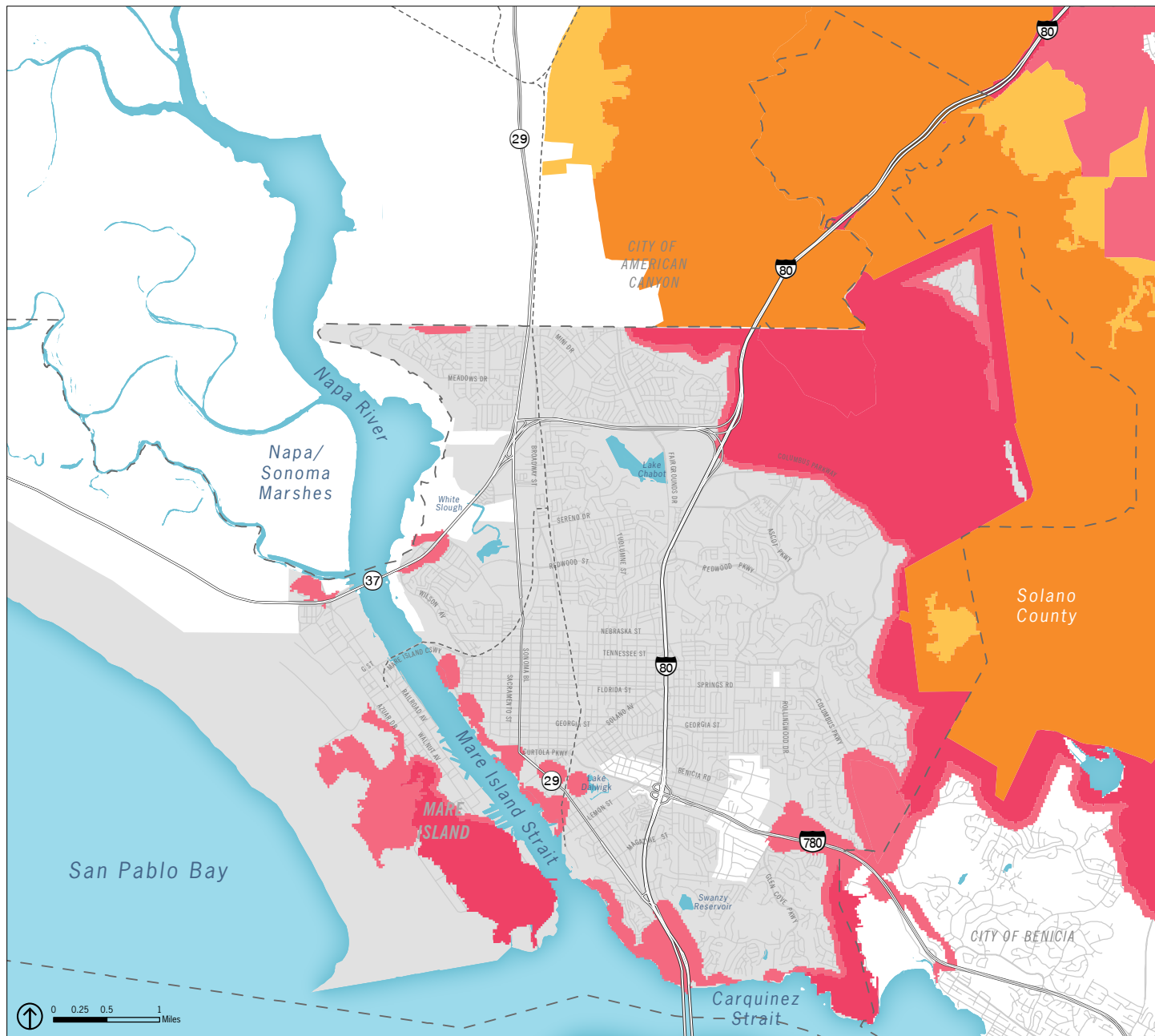
State Responsibility Area

- Moderate
- High

Vallejo Local Responsibility Area





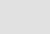

- Moderate
- High

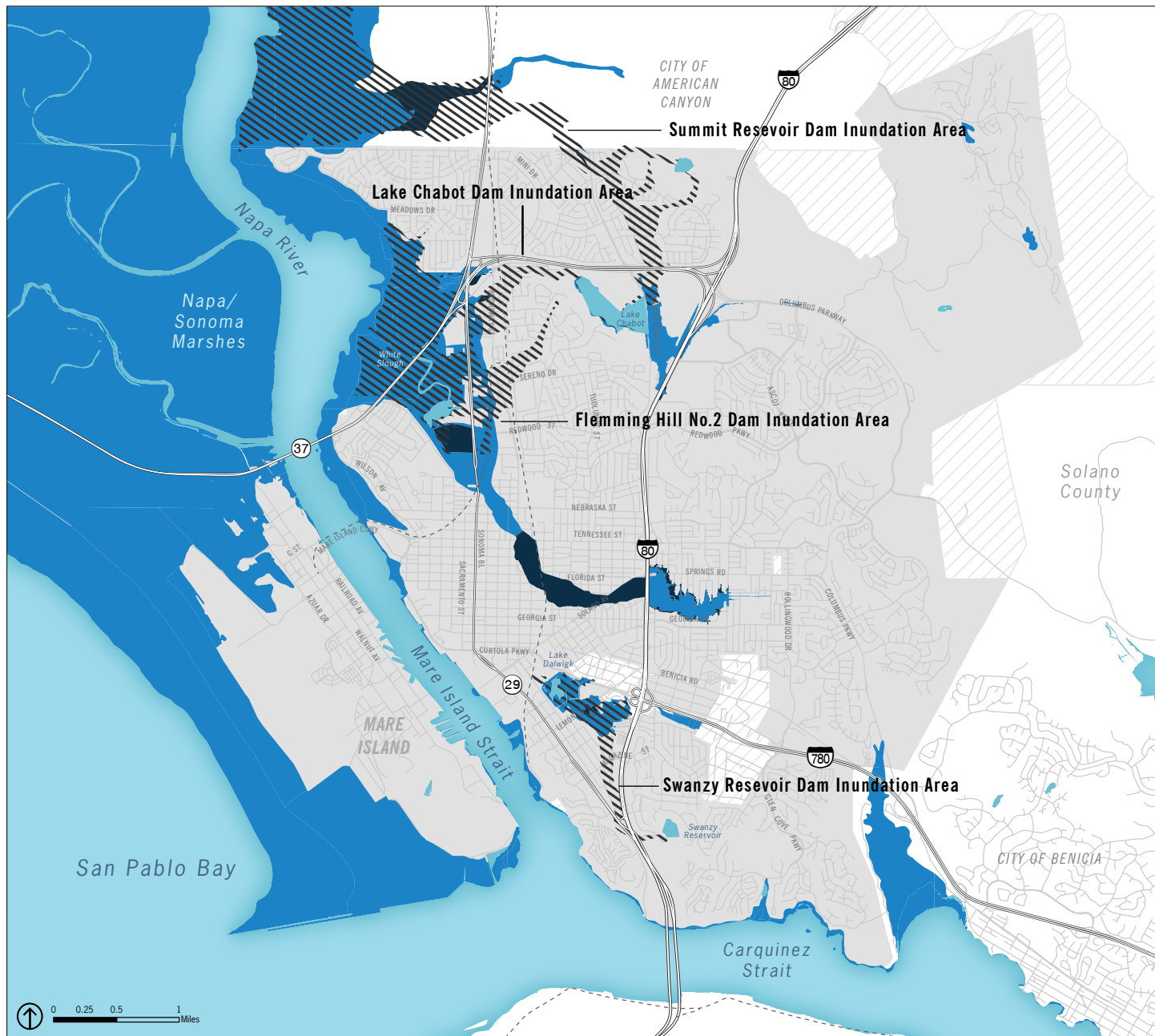
- Vallejo City Limit
- Sphere of Influence (SOI)
- Railroad



Source: City of Vallejo, 2014; Solano County, 2014; FRAP, 2007; ESRI 2010; PlaceWorks, 2016.

MAP NBE-5 Flood Zones and Dam Inundation Areas

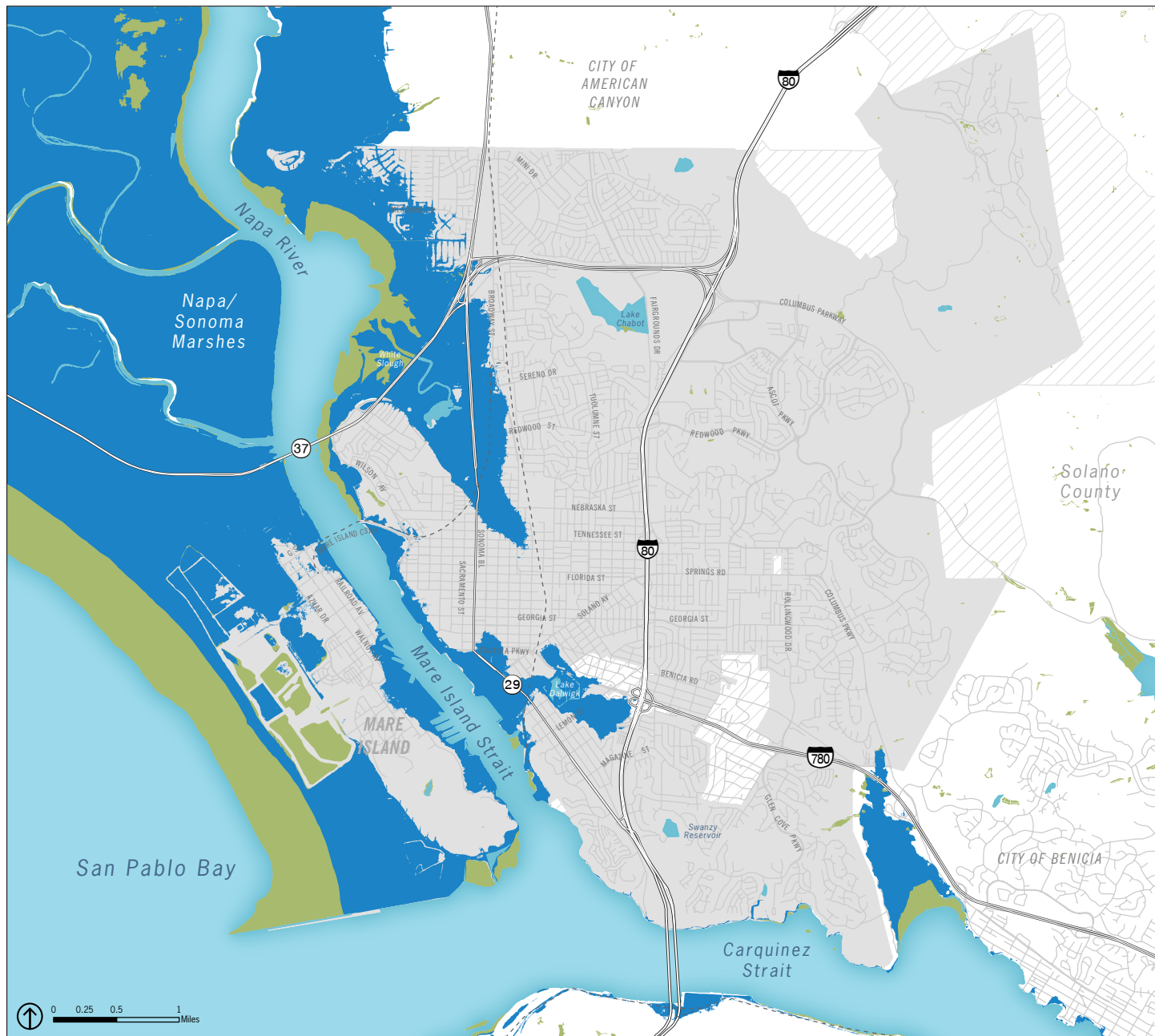
-  100-Year Flood Zone
-  500-Year Flood Zone
-  Dam Inundation Areas
-  Railroad
-  Vallejo City Limit
-  Sphere of Influence (SOI)



Source: City of Vallejo, 2014; Solano County, 2014; OES, 2009; ESRI, 2010; FEMA, 2014/2015; PlaceWorks, 2016.

MAP NBE-6 Projected Sea Level Rise

- Area vulnerable to a projected 55-inch sea level rise by 2100 (100-year recurrence level)
- Vallejo City Limit
- Sphere of Influence (SOI)
- Railroad
- Wetland



Disclaimer: Inundation data does not account for existing shoreline protection or wave activity. This map is for informational purposes only. Users, by their use, agree to hold harmless and blameless the Association of Bay Area Governments along with the State of California and its representatives and its agents for any liability associated with its use in any form. The maps and data shall not be used to assess actual coastal hazards, insurance requirements, or property values or be used in lieu of Flood Insurance Rate Maps issued by the Federal Emergency Management Agency (FEMA).

Source: City of Vallejo, 2014; Solano County, 2014; Knowles, Noah. 2010. Potential Inundation Due to Rising Sea Levels in the San Francisco Bay Region. San Francisco Estuary and Watershed Science, 8:1. Available at http://escholarship.org/uc/search?entity=jmie_sfew;volume=8;issue=1. Data from website: <http://cascade.wr.usgs.gov>; ESRI, 2010; PlaceWorks, 2016.

MAP MTC-1 Regional Connections

Regional Bus Transit

- SolTrans
- Napa VINE
- Vallejo Transit Center
- Park and Ride
- Planned Park and Ride

Truck Routes

- State Highway Truck Route
- City of Vallejo Designated Truck Route

Water

- Ferry Terminal
- Ferry Routes
- - - Wharf
- - - Railroad
- Sphere of Influence (SOI)
- Vallejo City Limit



Source: City of Vallejo, 2014; Solano County, 2014; Metropolitan Transportation Commission 2007/2014; ESRI 2010; Fehr & Peers, 2014; STA Park and Ride Lots, 2016; PlaceWorks, 2016.



MAP MTC-2 Regional Trail Network

- Bay Trail (Existing)
- - - Bay Trail (Planned/Proposed)
- Vine Trail (Existing)
- - - Vine Trail (Planned/Proposed)
- - - Bay and Vine Trail (Planned/Proposed)
- Blue Rock Springs Corridor Trail (Existing)
- Ridge Trail (Existing)
- - - Ridge Trail (Planned/Proposed)
- - - Bay and Ridge Trail (Planned/Proposed)
- Rollye Wiskerson Trail (Existing)
- Other Trails
- Water Trail Access Points (Planned/Proposed)
- - - Railroad
- Sphere of Influence (SOI)
- Vallejo City Limit







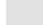


Notes:

- ① The Great California Delta Trail (proposed) and the Carquinez Strait Scenic Loop Trail co-locate with the Bay Trail and Ridge Trail in southern Vallejo along the Carquinez Strait.
- ② The depiction of the Bay Trail (planned) is for illustrative purposes. The trail should be located along the waterfront or as close to the waterfront as feasible. (Action MTC-1.5A)



Source: City of Vallejo, 2014; Solano County, 2014; SF Bay Water Trail, 2014; Bay Area Open Space Council, 2014; Metropolitan Transportation Commission 2014; Delta Protection Council, 2016; USGS, 2014; ESRI 2010; PlaceWorks, 2016.

MAP MTC-3 Circulation

-  Freeway
-  Principal Arterial/State Route
-  Two-Lane Divided Highway
-  Arterial
-  Collector
-  All other roads classified as Local Roads
-  Vallejo City Limit
-  Sphere of Influence (SOI)
-  Railroad

Note regarding Mare Island roadway system:

The Mare Island Specific Plan describes a system of boulevards, avenues, commercial streets, and residential streets. For the purposes of this baseline report, the key streets shown are identified as collectors and arterials.



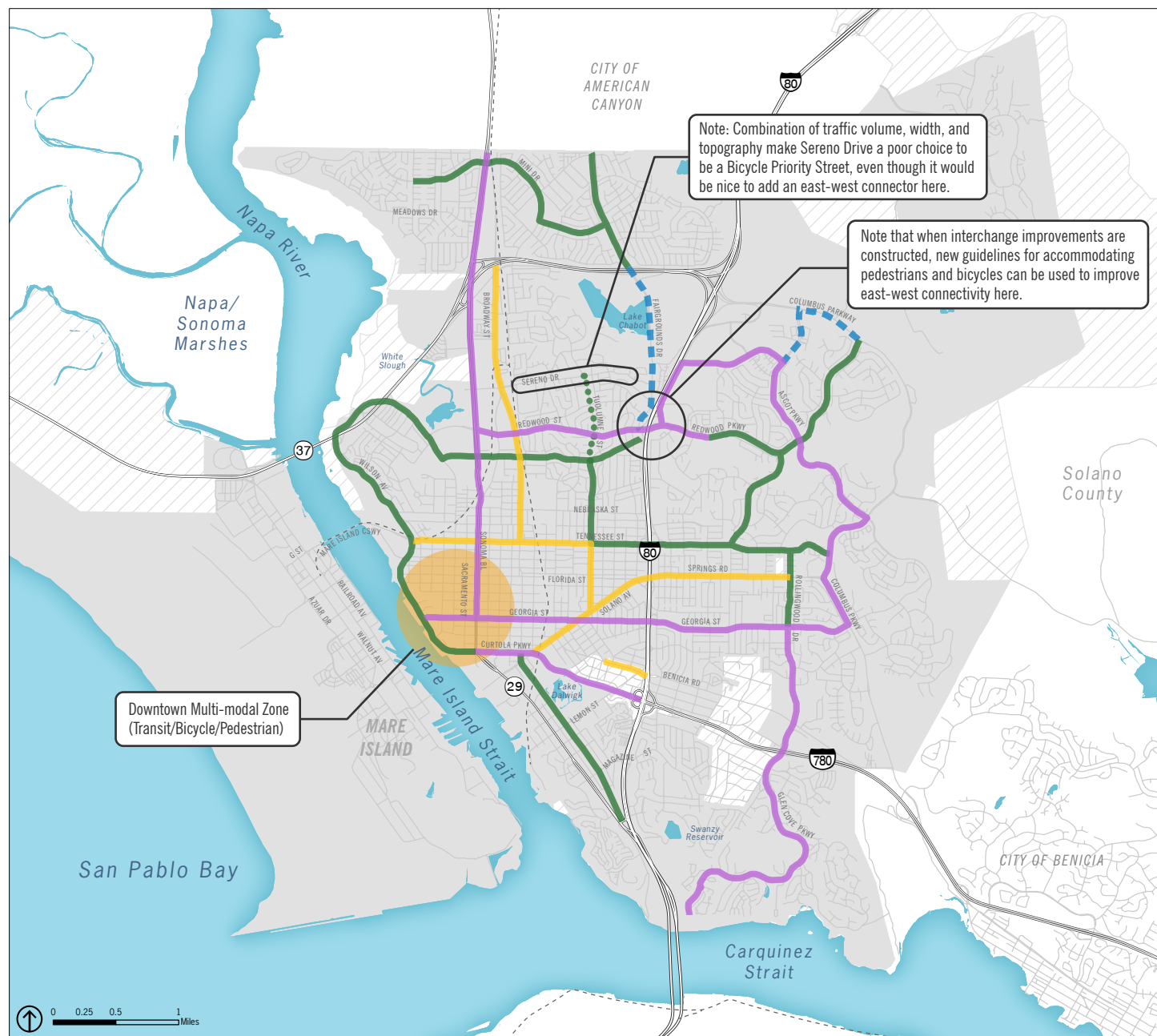
Source: City of Vallejo 1999 General Plan; Solano County, 2014; Fehr & Peers, 2016; PlaceWorks, 2016.



MAP MTC-4 Preliminary Complete Streets Overlay

- Neighborhood Corridor
- Transit Street
- Bicycle Priority Streets
- - - Usable Segments for Transit Route (need exists for transit)
- Potential Valuable Bicycle Priority Street (topography is poor)
- Vallejo City Limit
- Sphere of Influence (SOI)
- - - Railroad

The overlay network will be developed in coordination with the Pedestrian and Bicycle Master Plan.



Source: Fehr & Peers, 2016; City of Vallejo, 2014; PlaceWorks, 2016.

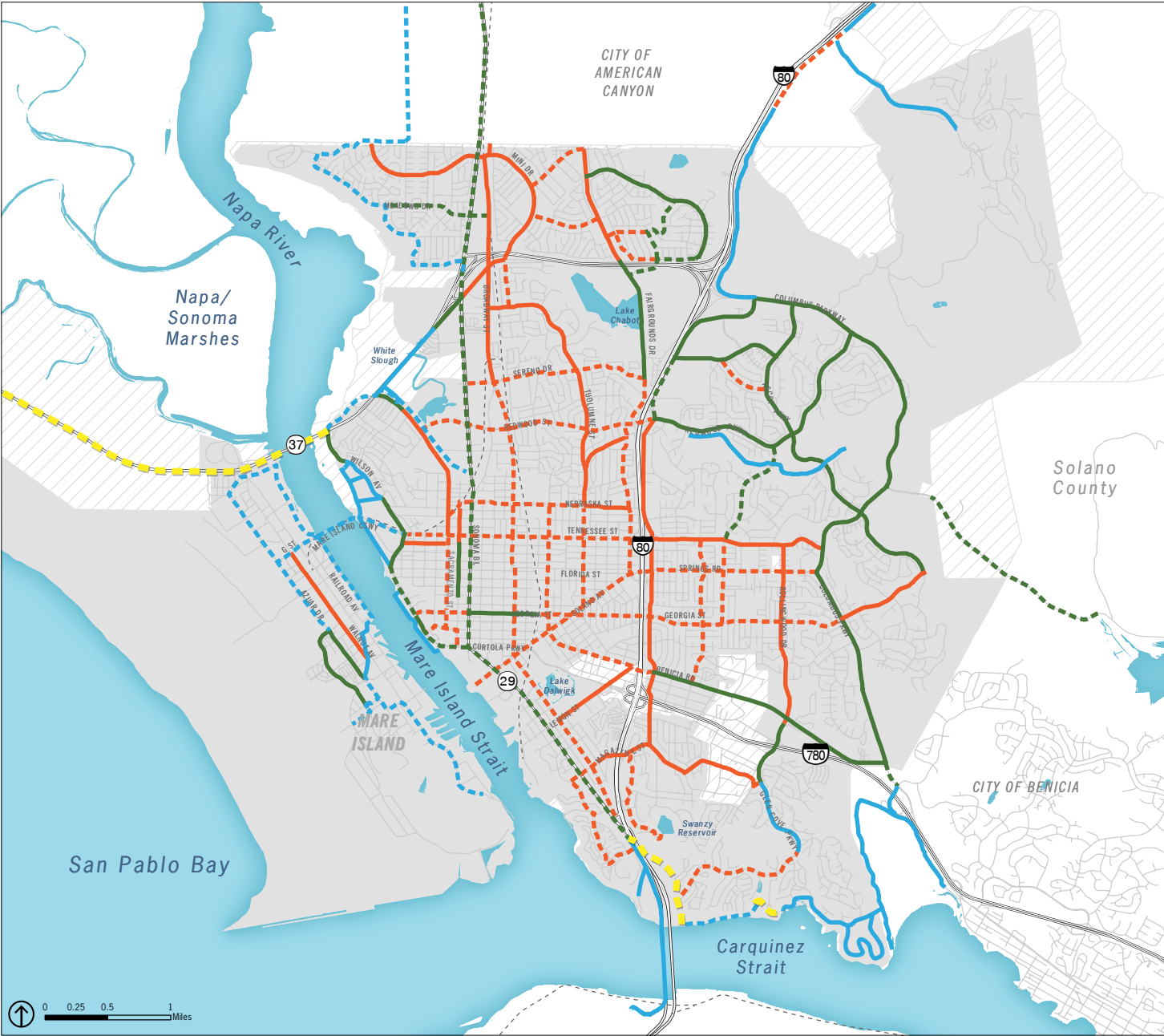


MAP MTC-5 Bicycle Network

- Class 1 Bicycle Facility (Existing)
- Class 1 Bicycle Facility (Planned/Proposed)
- Class 2 Bicycle Facility (Existing)
- Class 2 Bicycle Facility (Planned/Proposed)
- Class 3 Bicycle Facility (Existing)
- Class 3 Bicycle Facility (Planned/Proposed)
- Planned Bay Trail Extension
- Vallejo City Limit
- Sphere of Influence (SOI)
- Railroad

Revised 08/16/2017

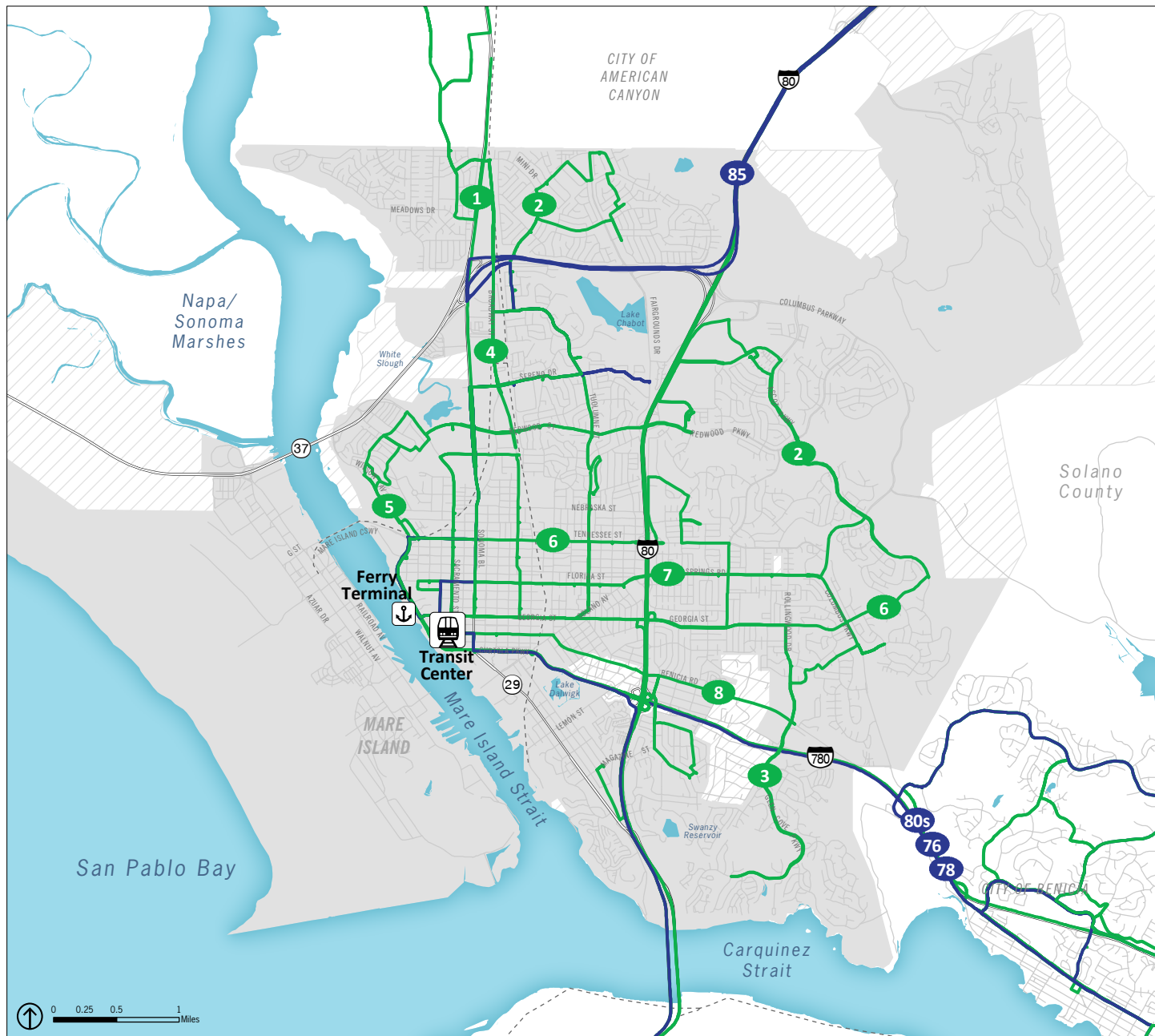
Note: Bicycle Network to be Revised per Action MTC-2.1A



Source: Field survey by Fehr & Peers, November 2014; Solano Countywide Bicycle Transportation Plan (2012); San Francisco Bay Trail website (www.baytrail.org); Vallejo Trails Master Plan (1988); Sonoma Blvd Specific Plan (2017); Solano Yolo Bike Links Map (2014); Mare Island Specific Plan (2008).

MAP MTC-6 Transit Service

- # Local Routes
- # Multi-Zone Routes
- Vallejo City Limit
- Sphere of Influence (SOI)
- - - Railroad



Source: Soltrans website, www.soltransride.com; Solano Yolo Bike Links Map (2015).